

FYI

FOR YOUR INFORMATION

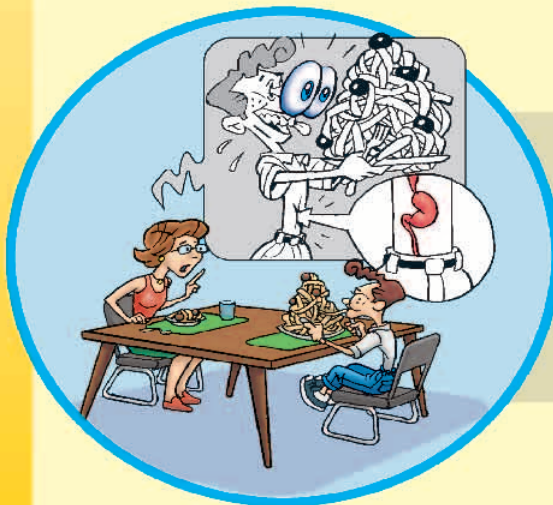
In this lesson we learned the expressions “to cross one’s heart,” and “my lips are sealed.” You probably realized that they both refer to parts of the body. We’re going to take a look at some other parts of the body used in English expressions. When taken word-for-word, expressions like these can sometimes be difficult to understand or sound very funny. The following pictures show what might happen if you tried to read them word-for-word.

They are walking **arm-in-arm**. — to walk with one’s arm resting on another person’s arm.



“I’m **all ears**.” — said to someone to let them know that you are listening to her or him with complete concentration.

“Let me **give/lend you a hand.**” — an offer to help someone.



“Your eyes are **bigger than your stomach.**” — used mostly by an adult to a child who has taken more food than she or he can possibly eat.

These are just a few of the many expressions that have to do with parts of the body. Can you think of any more?